

PB1890



The 1890 is the most popular Spider Lift in Australasia. Economical, very compact, simple to use, reliable, and excellent outreach. OK! No wonder.

With its light weight design, the 1890 is very easy to transport on Monitor's strong galvanised steel trailer. The tracks expand out and down to give excellent off-road ability, and yet with the tracks retracted, the 1890 has incredible stowed dimensions of only 792 x 1951 mm which allows it to drive through a domestic doorway!

The extra-long travel stabiliser legs on the 1890 makes it the first choice for working on sloping sites. Narrow paths, nice lawns, sloping ground? That's 1890 country! With its dual power function and super-compact dimensions, the 1890 is brilliant where a lot of outreach is required in confined indoor locations.

The PRO version offers 14 hp water-cooled twin cylinder Kubota diesel, auto-levelling, 2 speed drive and radio-controlled drive and stabilisation.



Far left: Low ground pressure and compact dimensions make the 1890 unbeatable for indoor works.

Above middle: The 1890 Pro with Kubota diesel engine, remote control and auto level.

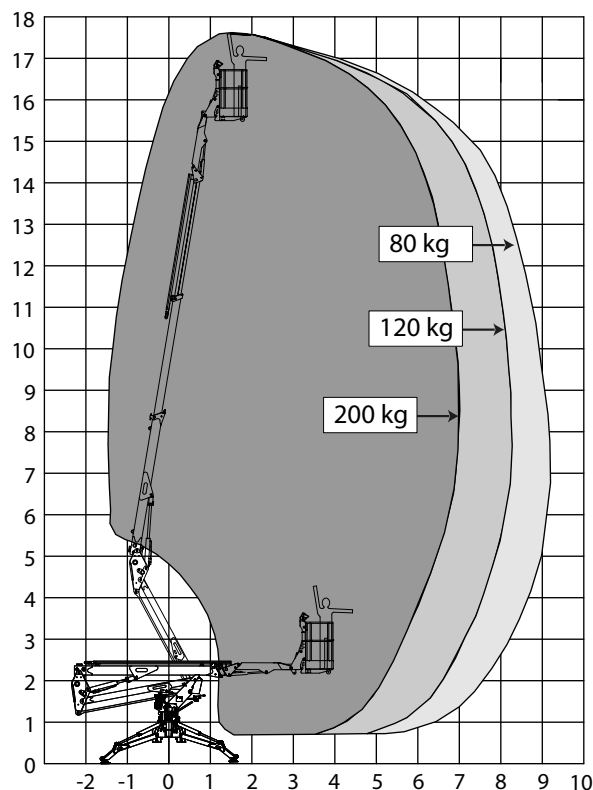
Above right: Ideal for sensitive surfaces such as these tennis courts.

Opposite page: This package weighs in at approx. 3.1 t, so is easy to tow behind many tradesman's utes.

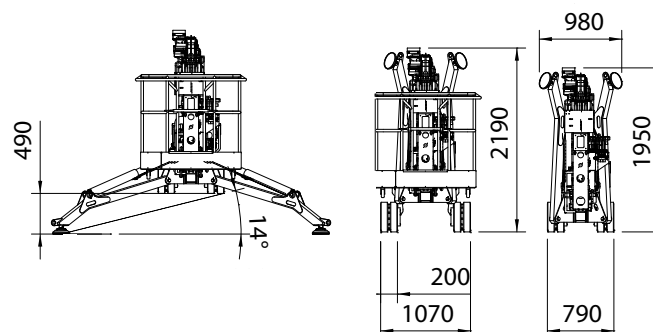
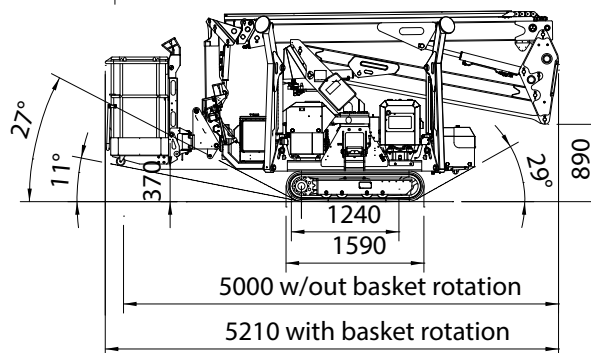
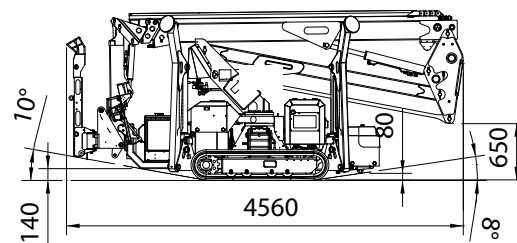
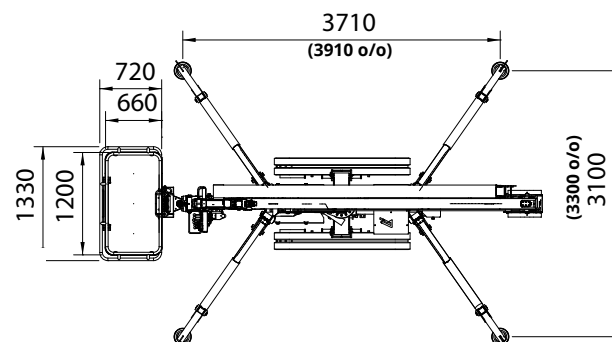
PB1890

Max working height	17.60 m
Max working height in narrow set	N/A
Max horizontal outreach	8.70 m
Max SWL	200 kg
Weight: Engine + 240V	2457 kg (2530 kg Pro)
: Engine + Batteries	2620 kg (2683 kg Pro)
Turret rotation	360 °
Basket rotation	140 °
Ground pressure driving (approx)	47 kN/m ²
Max stabiliser force	17.4 kN
Max stabiliser pressure (std foot pad)	478 kN/m ²
Traffic load (live load) travelling	3.73 kN/m ²
Traffic load (live load) stabilised wide	2.28 kN/m ²
Traffic load (live load) stabilised narrow	N/A
Auto levelling	Optional (Std on Pro)
Max slope for stabilisers (no extra pads)	14 °
Gradeability lengthwise	27 °
Gradeability sideways	15 °
Standard power source	Honda 13 Hp Petrol
Optional power source	Kubota 14 Hp Diesel (Std on Pro)
Dual power options	240V Electric or Batteries
Expanding tracks	Std
Drive Speed	1.5 km/h (2.5km/h Pro)
Radio control	Optional (Std on Pro)
Electric emergency lowering	Optional

(All specs E&OE and subject to change)



*Diagram shown with NO basket rotation



SEE THE 1890
IN ACTION

